

VLSI

DCNW33394304
LYNN CONWAY
XEROX CORP
3333 COYOTE HILL RD
PALO ALTO CA 94304

040982 803
0383
VLD

DESIGN

MARCH/APRIL 1983



It takes more than a visual once-over to reveal the real differences between CAE workstations.

Editor-in-Chief

Jerry Werner

Managing Editor

Barbara S. Haymond

Technical Editor

Barbara Clifford

Technical Advisors

Robert P. Larsen

Allen F. Podell

Dr. Daniel G. Schweikert

Dr. Carlo H. Séquin

Editorial/Circulation

Monica Berg

Circulation Manager

Lorri Ungaretti

Design Consultant

Mike Shenon

Designer

Willy Keats

Publisher

Douglas G. Fairbairn

Associate Publisher

Joy Deason Mole

Advertising Coordinator

Anne Dodge

Sales Representatives**West Coast**

Neal Manning

(408) 268-5649

East Coast

Charles Winnicky

(201) 234-9497

Midwest

Norman Mole

(815) 459-9004

VLSI DESIGN, March/April 1983, Volume IV, No. 2. Publication of Redwood Systems Group, P.O. Box 50518, Palo Alto, CA 94303-0518. (415) 966-8340. Copyright 1983 Redwood Systems Group. All rights reserved. Reproduction in whole or in part without permission is prohibited. The subscription rates for VLSI DESIGN are \$19.95/6 issues and \$37.95/12 issues (U.S.); \$29.55/6 issues and \$57.15/12 issues (Canada and Mexico); \$45/6 issues and \$90/12 issues (Europe/S.Am./C.Am.); and \$55/6 issues and \$110/12 issues (Japan/Asia/Australia). Foreign rates include airmail delivery (except Canada). All payments must be made in U.S. dollars drawn on a U.S. bank. Foreign subscriptions must be prepaid.

VLSI DESIGN (ISSN 0279-2834) is published six times a year by Redwood Systems Group, P.O. Box 50518, Palo Alto, CA 94303-0518. Second class controlled circulation postage paid at Mountain View, CA and additional entry office, San Jose, CA.

POSTMASTER: Send address changes to VLSI DESIGN, P.O. Box 50518, Palo Alto, CA 94303-0518.

VLSI DESIGN was founded to explore, expand, and define the interrelations between very-large-scale integrated circuits (VLSI) and computer architecture, design strategies, costs, and aids, as well as the electronics industry as a whole. VLSI DESIGN is unique in that it is written by and for the participants in this dynamic field. VLSI DESIGN intends to be the communication focus of a new VLSI design community, encourage its development, and help define its directions.

Over 25,500 copies of this issue printed.

VLSI DESIGN

Volume IV, No. 2 March/April 1983

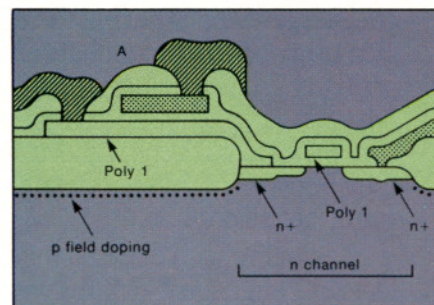
Cover

Several of the new breed of computer-aided engineering (CAE) workstations obviously *look* different from one another, but the real differences lie in the breadth of their respective applications software packages, and in their intended enhancements. These tools are to the VLSI designer what oscilloscopes and logic analyzers are to conventional circuit designers. Cover illustration by Nancy Freeman, San Francisco, CA.

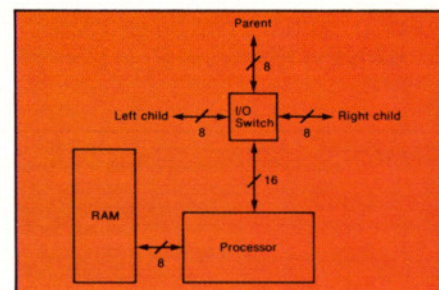


Departments

- 5 Letters
- 6 Calendar
- 8 From the Editor
- 10 People
- 17 News
- 43 Literature Review
- 62 Technology Insight
Two-layer Metal CMOS vs.
Two-layer Poly CMOS
- 72 University Scene
- 78 VLSI DESIGN Billboard
- 80 Classified Advertising
- 80 Advertisers' Index

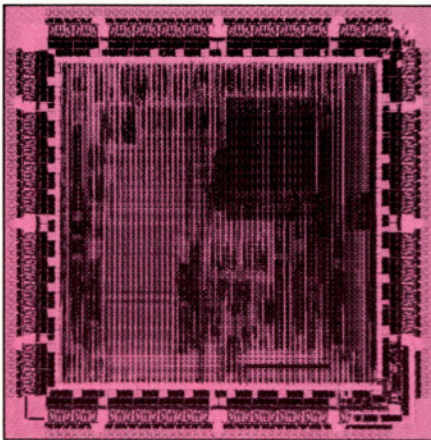


Page 62

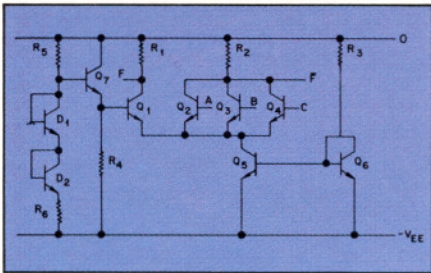


Page 72

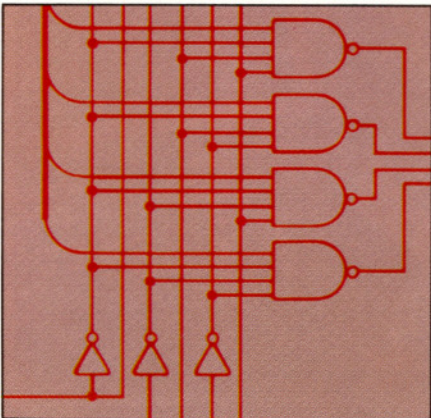
Articles



Page 34



Page 65



Page 58

18 The 1983 CICC

If you want to find out what the future holds for full-custom ICs and gate arrays, you needn't look beyond the fifth annual Custom Integrated Circuits Conference.

24 Software That Resides In Silicon

Ron Slamp and Jim Person, *Intel Corporation*

The authors point out several system-level issues that designers should consider before committing operating-system software to a chip.

34 Testability and Maintainability with a New 6K Gate Array

David R. Resnick, *Control Data Corporation*

This large gate array can test itself in the "Check-sum mode," using a pseudo-random number generator to create test operands.

46 Sorting Out the CAE Workstations

Jerry Werner, *Editor-in-Chief*

This report describes the most useful features of the new computer-aided-engineering (CAE) workstations, and includes a comprehensive table of the various systems' capabilities.

58 Benchmarking the Workstations

Gary Robson, *Array Technology, Inc.*

The author describes the results of a benchmark test that all of the CAE workstation manufacturers were asked to run, and provides suggestions for readers who want to do their own benchmarking.

65 Stick-Layout Notation for Bipolar VLSI

M.I. Elmasry, *University of Waterloo, Ontario, Canada*

The author demonstrates how to use symbolic design notation to describe I²L, STTL, and ECL circuits.