

# **A Guide to LSI Implementation**

Second Edition

**Robert W. Hon and Carlo H. Sequin**

SSL-79-7 January 1980

© Copyright 1980 by R. W. Hon and C. H. Sequin. *All Rights Reserved.*

**XEROX**  
PALO ALTO RESEARCH CENTER  
3333 Coyote Hill Road / Palo Alto / California 94304



© XEROX

1979



DIF



IMP



POL



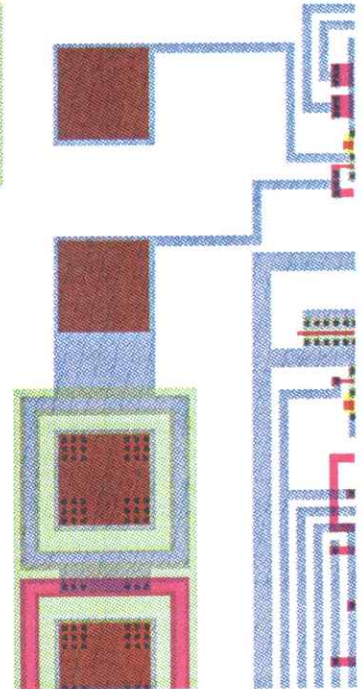
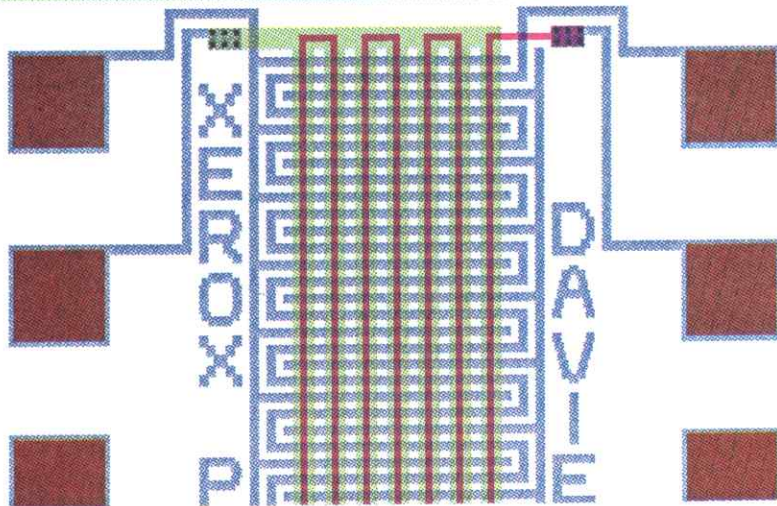
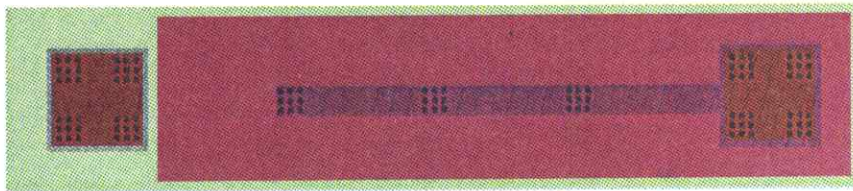
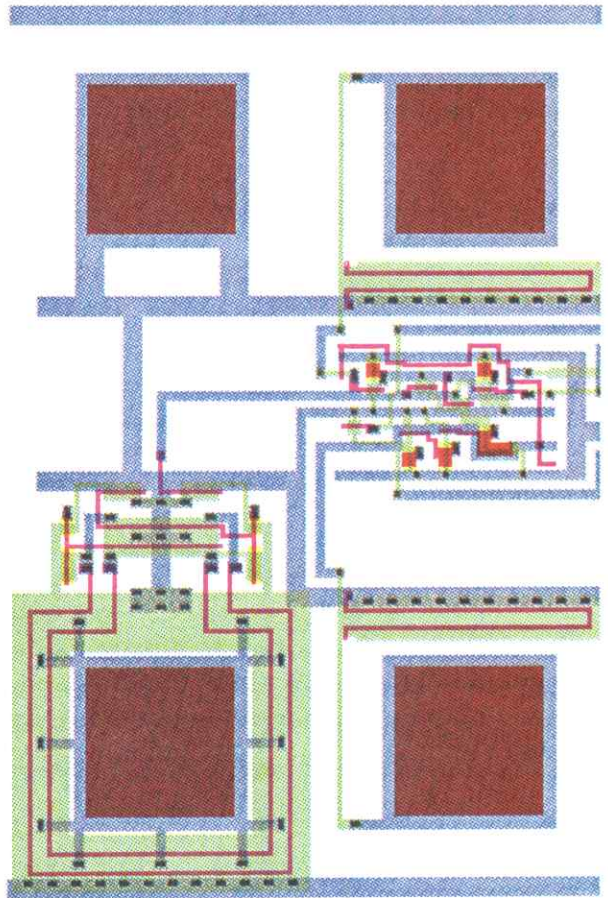
CUT



MET



PAD





to td,  
from those who know